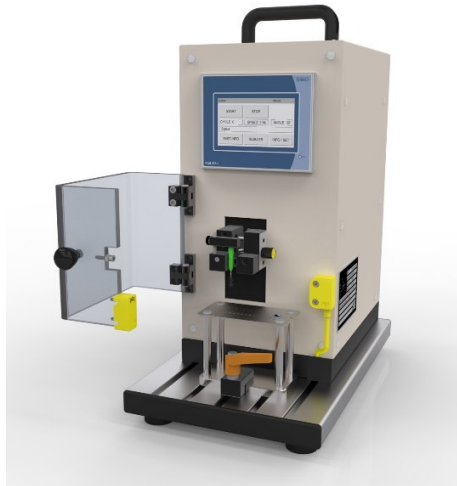




JWE GmbH

ISO 16409 Manual interdental brushes 5.3 Filament Retention



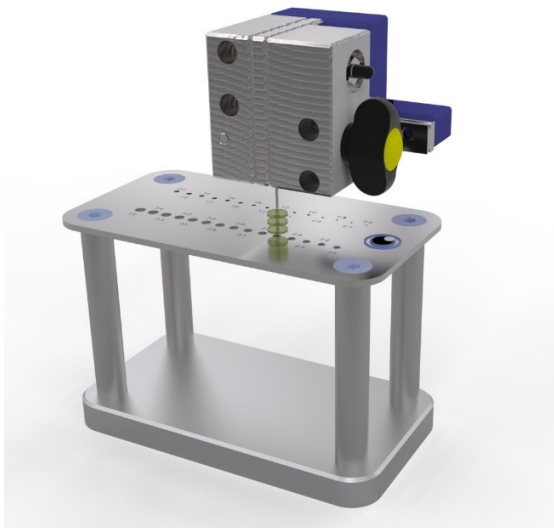
Function

The standard ISO 16409 contains a test of the Filament Retention.

The brush is moved to a hole 80 times. The brush must lose no filament.

The device includes a linear motion mechanism. The start and end position can be taught. The number of cycles is freely programmable.

The jigs allow the rapid fixation of different interdental brushes. Various brackets are attached.



Specification

Dimension (H, W, D)	ca. 400, 260, 250 mm
Weight	12.5 kg
Cycle Speed	1 – 10 mm/s
Distance	0 – 45 mm
Load	75 N
Power Supply	115/230 (50/60 Hz)

Ordering Information

Filament Retention Test 308-010

Scope of Delivery

- 1 Device + Jig + Load
- 1 Power Cord CEE 16A (5 m)
- 1 Operating Instruction



JWE GmbH

Function

The measuring plate is made of stainless steel with a thickness of (2.0 ± 0.1) mm. The measuring plate has a total of 30 holes with no sharp edges with a diameter of 0.6 mm up to 3.5 mm in increments of 0.1 mm. The Tolerances on hole diameter equal to ± 0.02 mm.



Specification

Dimension (W ,D ,H) ca.	150, 80, 250 mm
Weight	1.5 kg
Material	stainless Steel

Ordering Information

Measure Plate + Clamp	308-050
-----------------------	---------

Scope of Delivery

- 1 Measure Plate
- 1 Clamp

Conditions of Delivery

Delivery: EXW

Shipping time: by arrangement.

Technical changes reserved.

The illustrations may differ from the actual equipment.

All data without obligation and not-binding.

Contact

JWE GmbH

Tel. 0049 (0) 6173 3948596

Fax 0049 (0) 32 22 1455 209

Email info@jw-e.net

Web www.jw-e.net