



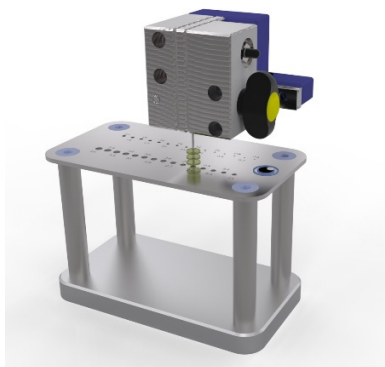
JWE GmbH

## ISO 16409 Manual interdental brushes

### Function



The measuring plate is made of stainless steel with a thickness of  $(2.0 \pm 0.1)$  mm. The measuring plate has a total of 30 holes with no sharp edges with a diameter of 0.6 mm up to 3.5 mm in increments of 0.1 mm. The Tolerances on hole diameter equal to  $\pm 0.02$  mm.



### Specification

Dimension (W ,D ,H ) ca. 150, 80, 250 mm  
Weight 1.5 kg  
Material stainless Steel, Aluminium

### Ordering Information

Measure Plate + Clamp 308-020

### Scope of Delivery

1 Measure Plate  
1 Clamp

### Conditions of Delivery

Delivery: EXW  
Shipping time: by arrangement.

Technical changes reserved.  
The illustrations may differ from the actual equipment.  
All data without obligation and not-binding.

### Contact

Joachim Wilhelm Engineering  
Tel. 0049 (0) 6173 3948596  
Fax 0049 (0) 32 22 1455 209  
Email [info@jw-e.net](mailto:info@jw-e.net)  
Web [www.jw-e.net](http://www.jw-e.net)